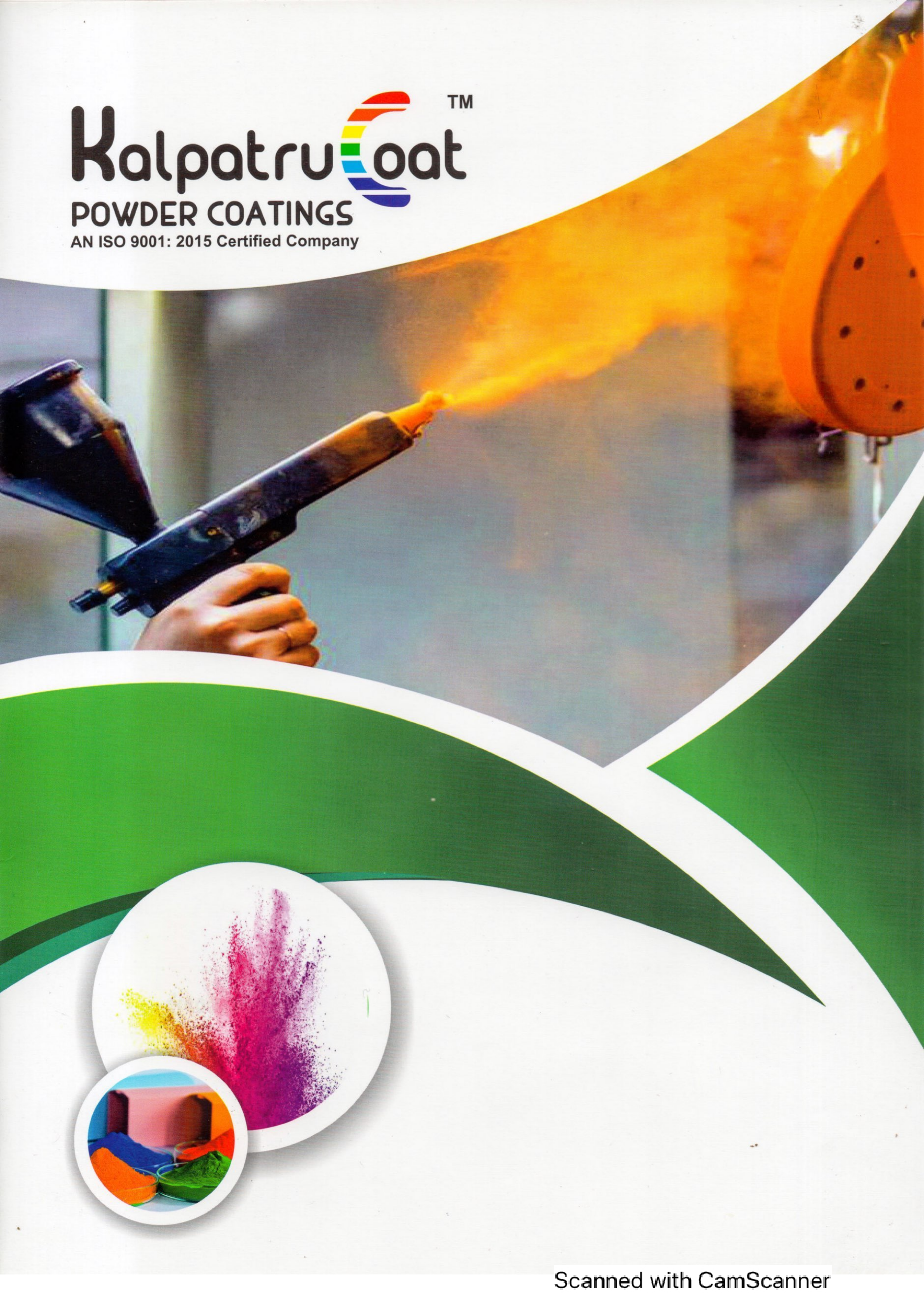


KalpatruCoat™

POWDER COATINGS

AN ISO 9001: 2015 Certified Company





BLACK MATT
HMF 1710



BLACK MATT PR
HMF 1711



BLACK MATT R
HMF 1712



BLACK DEAD MATT
EPF 1713



BCB BROWN MATT
HMC 1714



BROWN MATT 509
HMC 1715



CHESTNUT BROWN MATT
HMC 1716



TERRA BROWN MATT RAL 8028
HMC 1717



COFFEE BROWN MATT
HMC 1718



HARDWARE BROWN MATT
HMC 1719



BROWN MATT C1
HMC 1720



SIGNAL RED MATT
HMR 1721



PO RED MATT
HMR 1722



MAROON MATT
HMR 1723



WINE RED MATT
HMR 1724



DEEP ORANGE MATT
HMO 1725



RAL 2000
HMO 1726



CARROT PINK MATT
HMO 1727



GLORY PINK MATT
HMO 1728



BABY PINK MATT
HMO 1729



QUEEN PINK MATT
HMO 1730



TRAFFIC VIOLET MATT
HMO 1731



LILAC VIOLET MATT
HMO 1732



VIOLET MATT
HMO 1733



AZURE BLUE MATT
HMB 1734



SKY BLUE MATT
HMB 1735



OXFORD BLUE MATT
HMB 1736



PEPSI BLUE MATT
HMB 1737



ULTRA BLUE MATT
HMB 1738



OCEAN BLUE MATT
HMB 1739



PALE GREEN MATT
HMM 1740



MINT GREEN MATT
HMM 1741



PARROT GREEN MATT
HMM 1742



OLIVE GREEN MATT
HMM 1743



SEA GREEN MATT
HMM 1744



GOLDEN YELLOW MATT
HMY 1745



LEMON YELLOW MATT
HMY 1746



YELLOW RAL 1018
HMY 1747



BUFF YELLOW MATT
HMY 1748



BIEGE MATT
HMG 1749



DA GREY MATT
HMG 1750



MUNSHELL GREY MATT
HMG 1751



GRAPHITE GREY MATT
HMG 1752



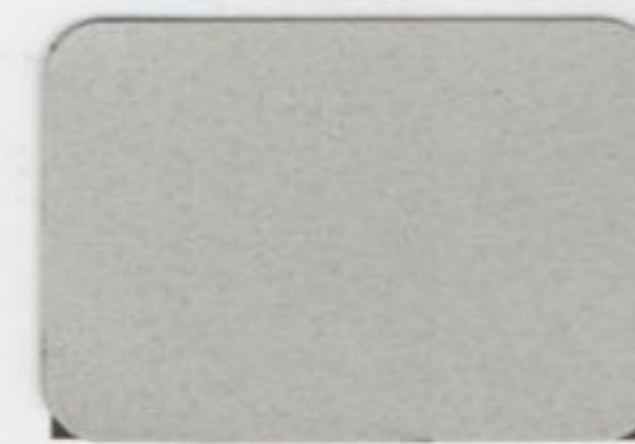
SIEMENS GREY MATT
HMG 1753



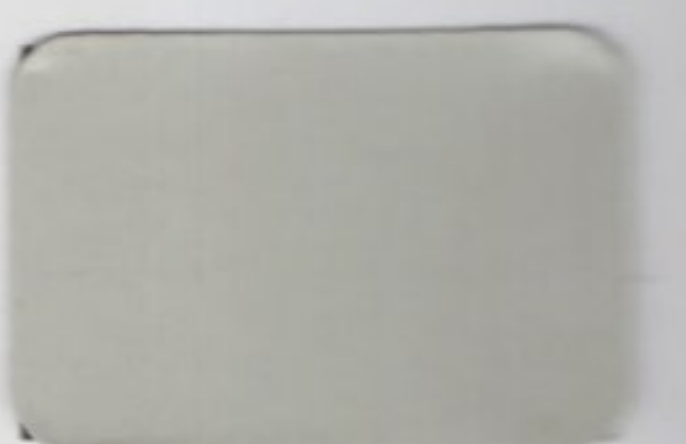
ANTHRACITE GREY MATT
HMG 1754



DOVE GREY MATT
HMG 1755



RAL 7035 MATT
HMG 1756

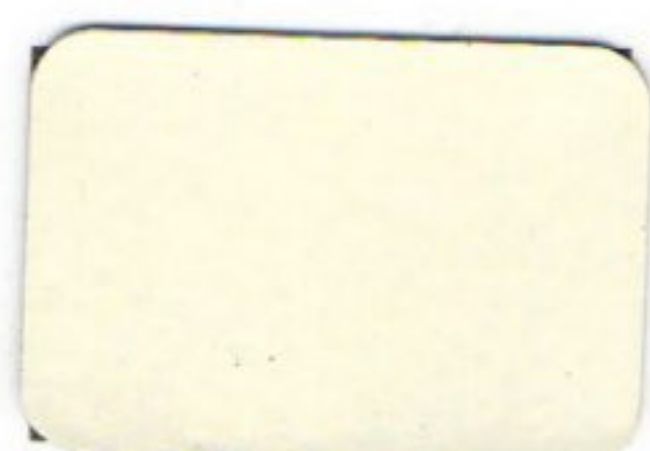


RAL 7032 MATT
HMG 1757

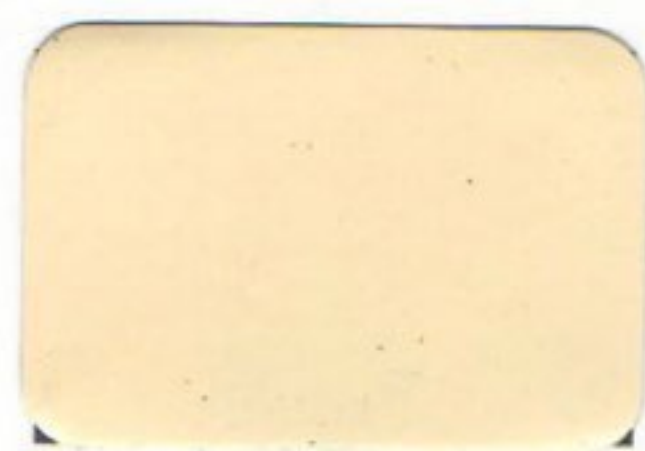
◀◀◀◀◀ **HYBRID MATT** ▶▶▶▶▶



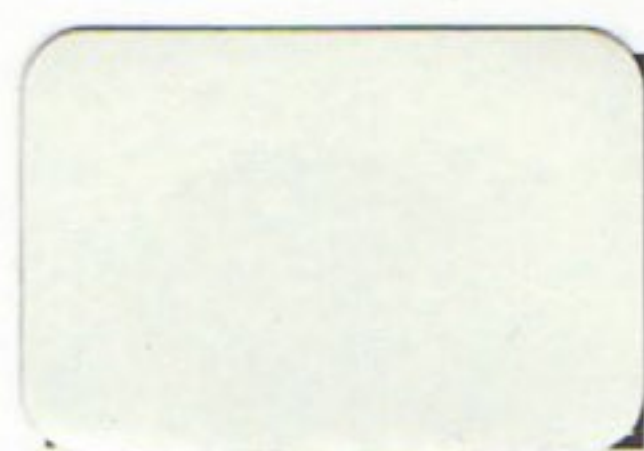
SMOKE GREY MATT
HMG 1758



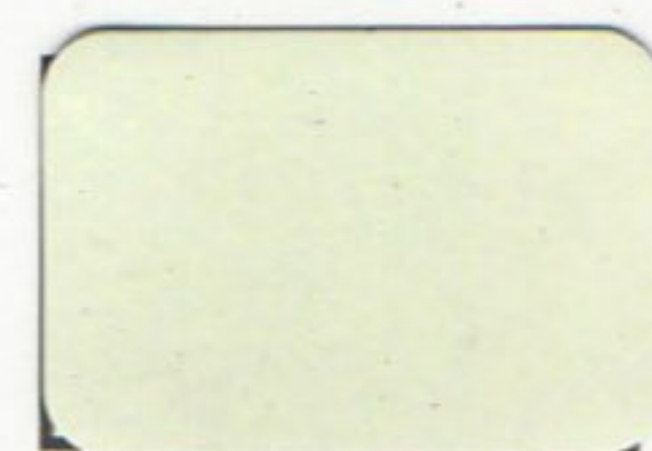
IVORY MATT
HMI 1759



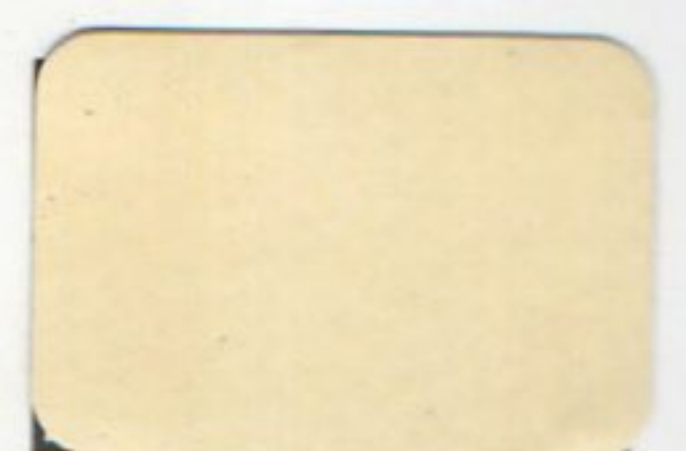
LIGHT IVORY MATT
HMI 1760



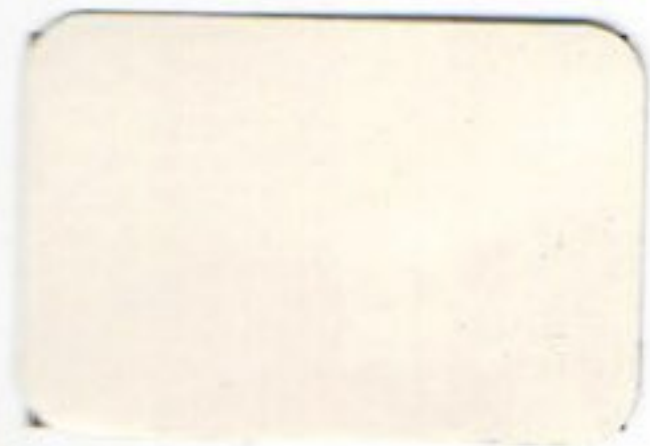
RAL 9010 MATT
HMI 1761



RAL 9001 MATT
HMI 1762



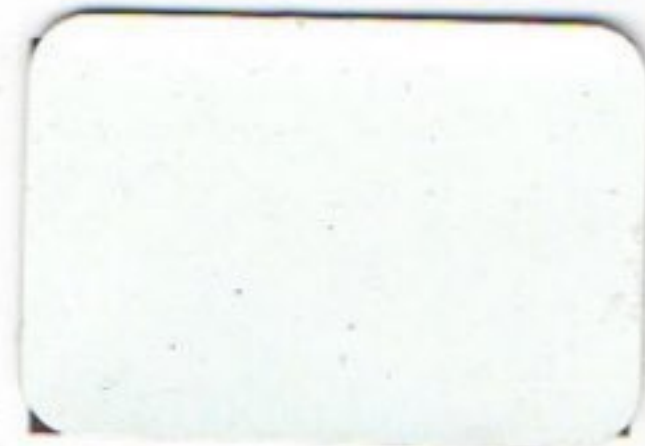
NEO IVORY MATT
HMI 1763



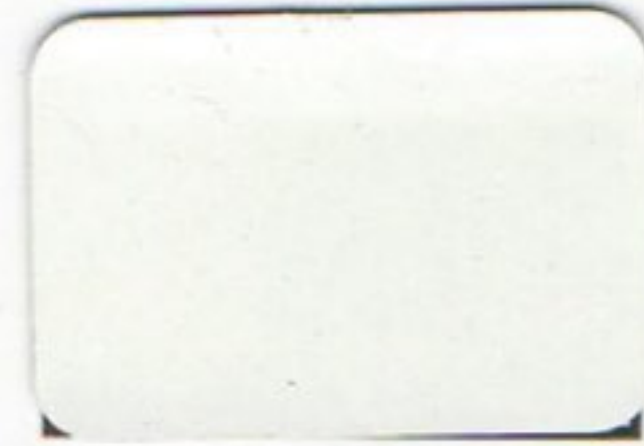
ANCHOR IVORY MATT
HMI 1764



MILKY WHITE MATT
HMW 1765



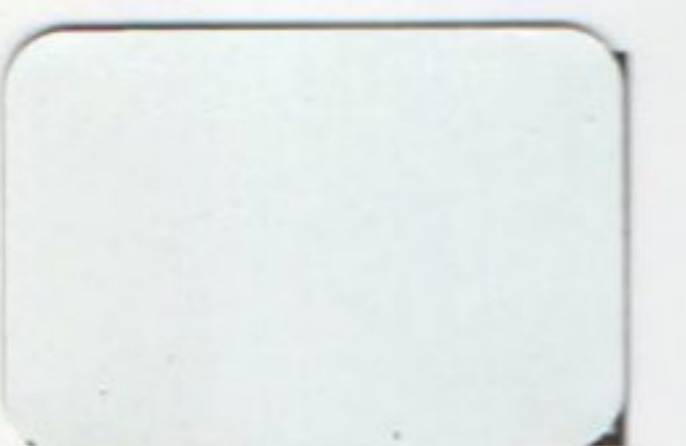
SM WHITE MATT
HMW 1766



INTRON WHITE MATT
HMW 1767



BROKEN WHITE MATT
HMW 1768



WHITE MATT
HMW 1769

◀◀◀◀◀ **HYBRID GLOSSY** ▶▶▶▶▶



BLACK GLOSSY
HGF 1770



SUPER BLACK GLOSSY
HGF 1771



DEEP DARK GREY GLOSSY
HGG 1772



BCB BROWN GLOSSY
HGC 1773



BROWN GLOSSY
HGC 1774



FAN BROWN GLOSSY
HGC 1775



CHESTNUT BROWN GLOSSY
HGC 1776



WINE BROWN GLOSSY
HGC 1777



RAL 8028 GLOSSY
HGC 1778



SIGNAL RED GLOSSY
HGR 1779



PO RED GLOSSY
HGR 1780



BRIGHT RED GLOSSY
HGR 1781



CARMINE RED GLOSSY
HGR 1782



DEEP ORANGE GLOSSY
HGO 1783



LIGHT ORANGE GLOSSY
HGO 1784



RAL 2000 GLOSSY
HGO 1785



GOLDEN YELLOW GLOSSY
HGY 1786



LEMON YELLOW GLOSSY
HGY 1787



BUFF YELLOW GLOSSY
HGY 1788



TURMERIC YELLOW GLOSSY
HGY 1789



BUS GREEN GLOSSY
HGH1790



LEAF GREEN GLOSSY
HGH 1791



MINT GREEN GLOSSY
HGH 1792



AQUA GREEN GLOSSY
HGH 1793



OLIVE GREEN GLOSSY
HGH 1794



PALE GREEN GLOSSY
HGH 1795



SKY BLUE GLOSSY
HGB 1796



DEEP BLUE GLOSSY
HGB 1797



OXFORD BLUE GLOSSY
HGB 1798



AZURE BLUE GLOSSY
HGB 1799

◀◀◀◀ METALLIC SHADES ▶▶▶▶



MET IKKA GOLD
MT 1903



MET HONEY GOLD
MT 1904



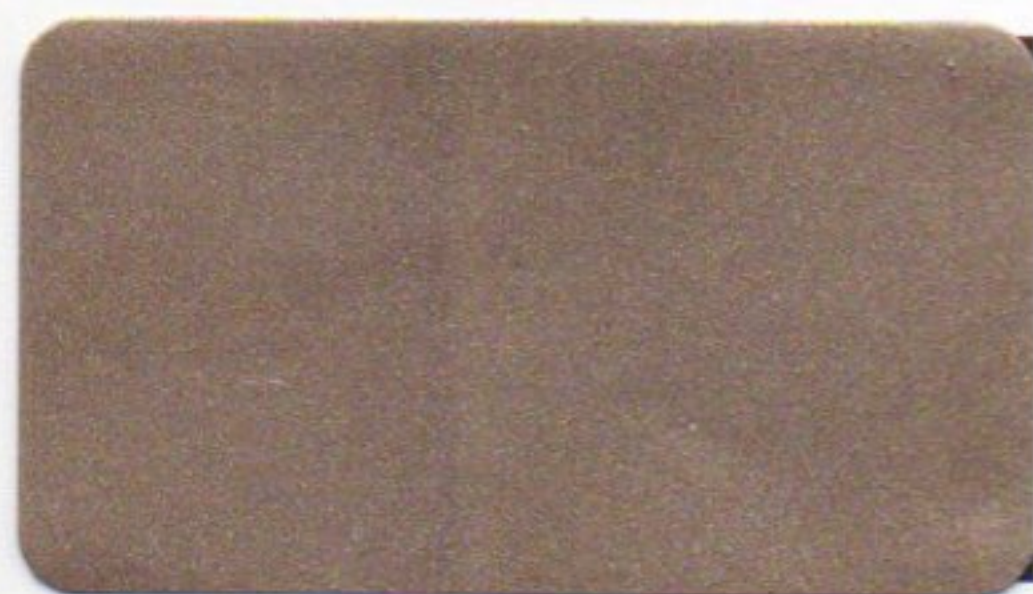
MET SILVER RAL 9007
MT 1905



MET SILVER GLOSSY MODIFIED
MT 1906



MET RAY SILVER MATT
MT 1907



MET WINE SILVER
MT 1908



MET SILVER NICKEL NO 3
MT 1909



CHARCOAL DEAD MATT
MT 1910



MET SMOKE GREY
MT 1911



METALLIC BLACK
MT 1912



GUNMETAL BLACK
MT 1913



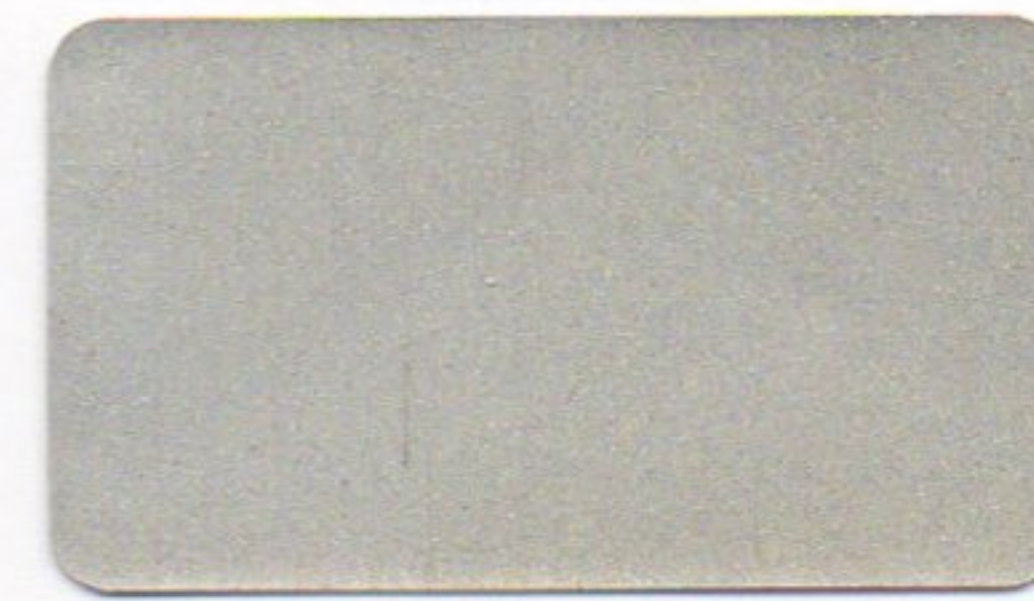
GUNMETAL GREEN BLACK
MT 1914



MET GOLD BLACK
MT 1915



MET MUSTARD GREEN
MT 1916



SPARKLE SILVER
MT 1917

◀◀◀◀ PURE POLYESTER ▶▶▶▶



PP BLACK GLOSSY
PP 1918



PP BLACK MATT
PP 1919



PP BLACK STRUCTURE
PP 1920



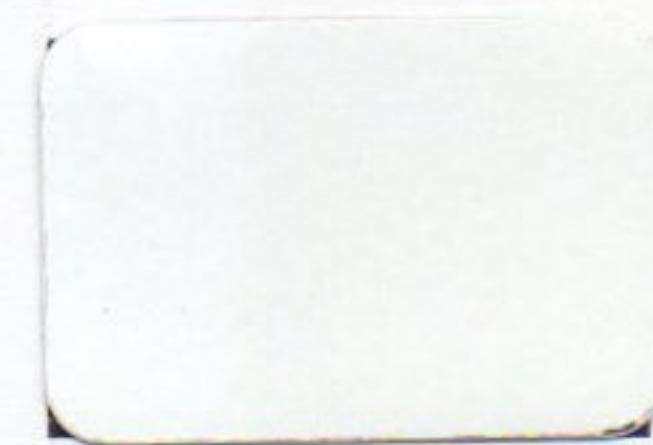
PP BLACK SATIN
PP 1921



PP BLACK TEXTURE
PP 1922



PP WHITE GLOSSY
PP 1923



PP WHITE MATT
PP 1924



PP WHITE STRUCTURE
PP 1925



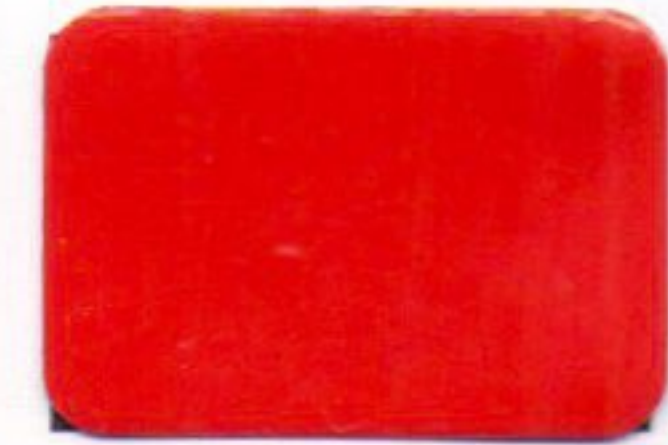
PP IVORY GLOSSY
PP 1926



PP BROWN GLOSSY
PP 1927



PP ORANGE GLOSSY
PP 1928



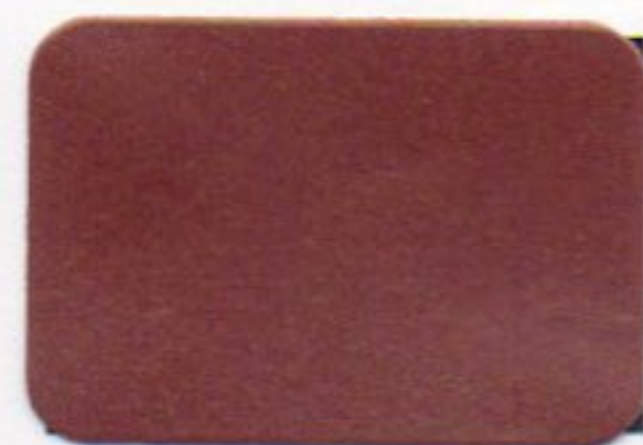
PP RED GLOSSY
PP 1929



PP GOLDEN YELLOW GLOSSY
PP 1930



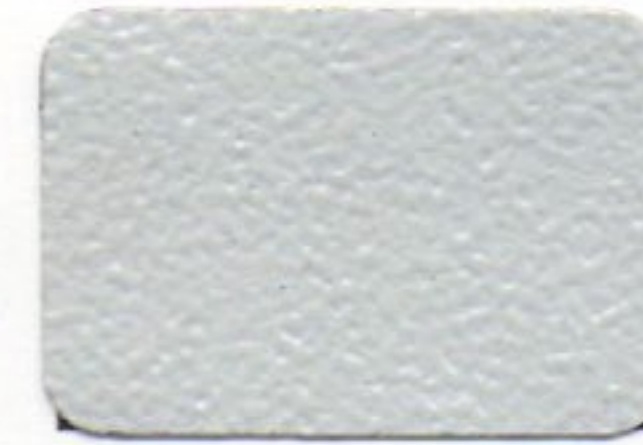
PP OXFORD BLUE GLOSSY
PP 1931



PP BROWN MATT
PP 1932



PP RAL 7032 STRUCTURE
PP 1933



PP RAL 7035 STRUCTURE
PP 1934



PP DA GREY GLOSSY
PP 1935



PP RAL 7016 GLOSSY
PP 1936



PP RAL 9005 GLOSSY
PP 1937

STRUCTURE



RAL 7018 STRUCTURE
HSG 1841



DVD GREY STRUCTURE
HSG 1842



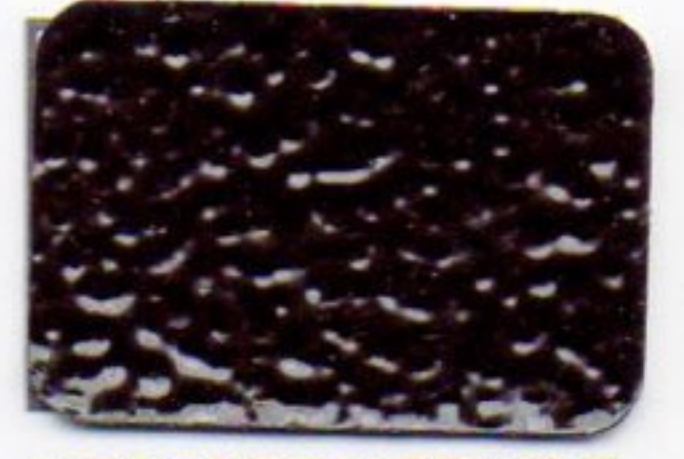
RAL 7021 GREY STRUCTURE
HSG 1843



BLACK STRUCTURE
HSN 1844



BLACK STRUCTURE MATT
HSN 1845



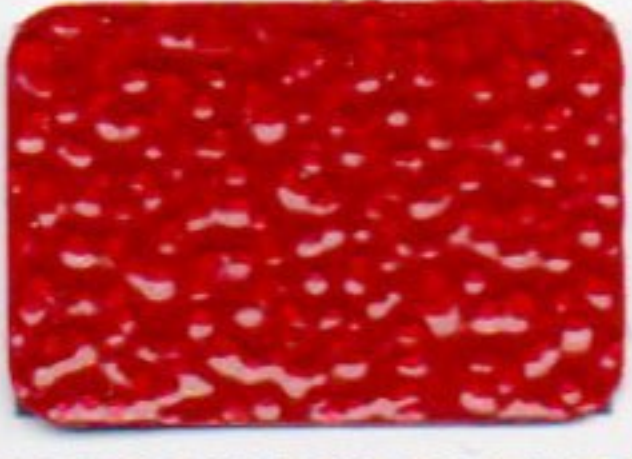
BCB STRUCTURE
HSC 1846



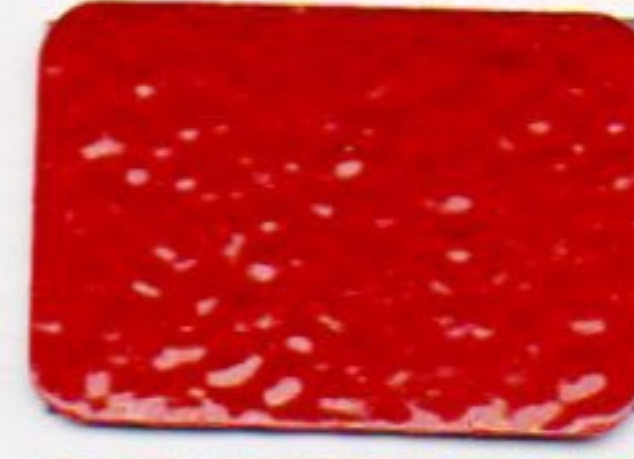
BROWN STRUCTURE
HSC 1847



HARDWARE BROWN STRUCTURE
HSC 1848



MAROON STRUCTURE
HSR 1849



RED STRUCTURE
HSR 1850



CARROT RED STRUCTURE
HSR 1851



PO RED STRUCTURE
HSR 1852



PINK STRUCTURE
HSO 1853



GLORY PINK STRUCTURE
HSO 1854



VIOLET STRUCTURE
HSV 1855



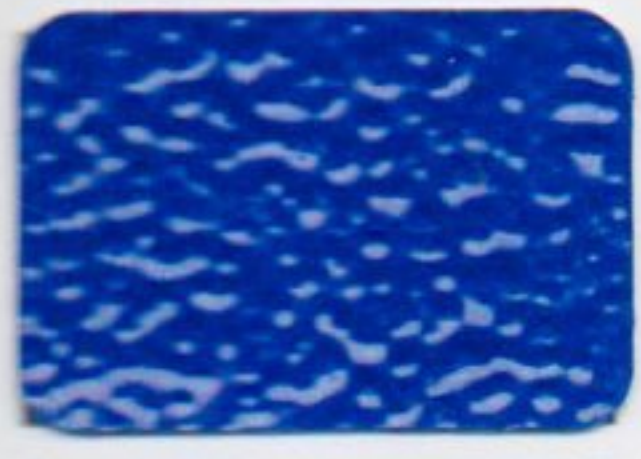
TRAFFIC VIOLET STRUCTURE
HSV 1856



ULTRA BLUE STRUCTURE
HSB 1857



VIP BLUE STRUCTURE
HSB 1858

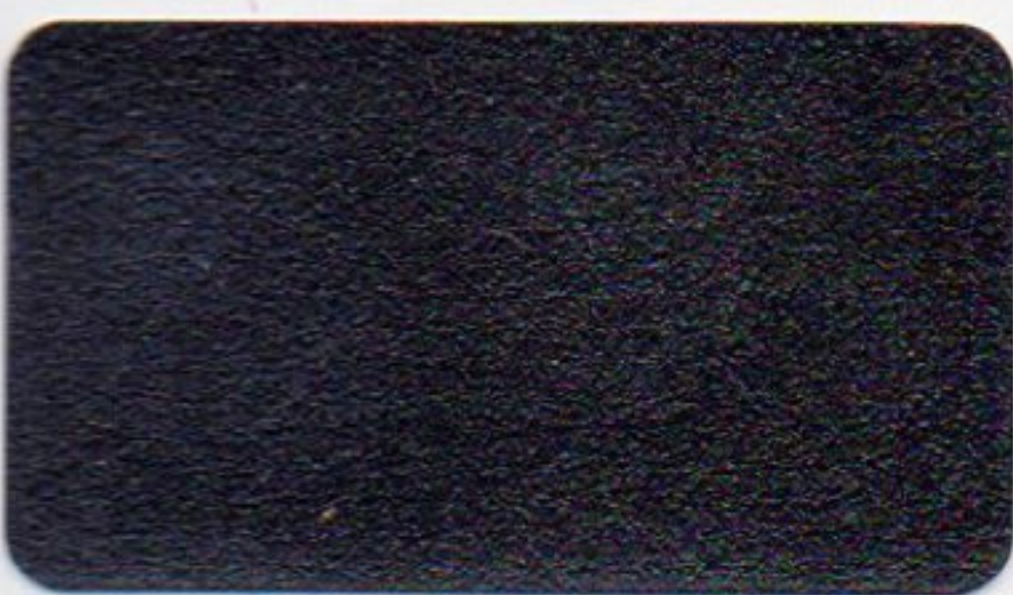


PEPSI BLUE STRUCTURE
HSB 1859



RAL 9001 STRUCTURE
HSB 1860

TEXTURE



BLACK TEXTURE
HTN 1861



BLACK MATT TEXTURE
HTN 1862



BLACK TEXTURE FINE
HTN 1863



DVD GREY TEXTURE
HTG 1864



ANTHRACITE GREY TEXTURE
HTG 1865



DA GREY TEXTURE
HTG 1866



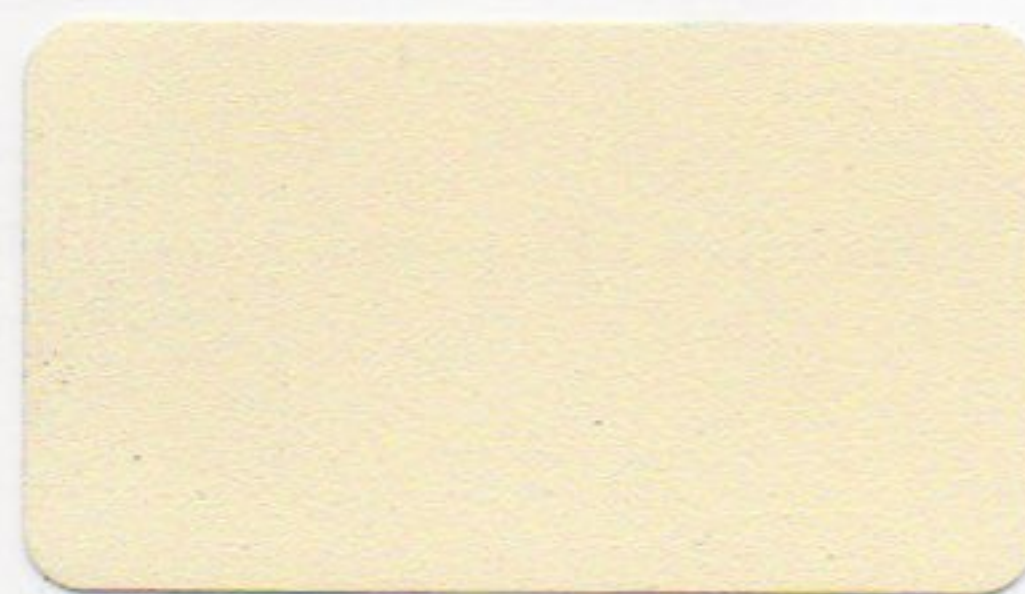
SMOKE GREY TEXTURE
HTG 1867



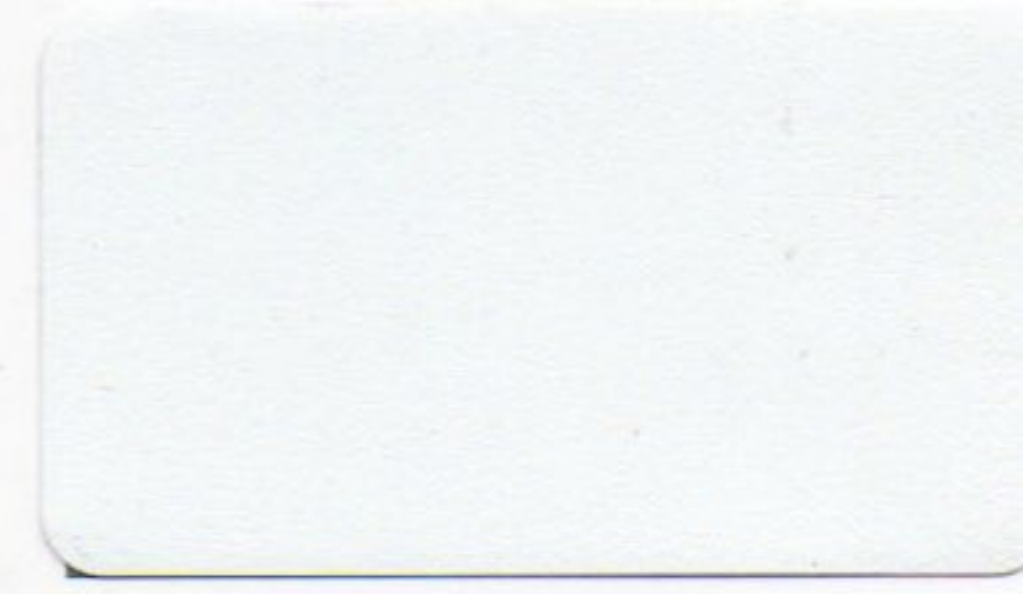
MIST GREY TEXTURE
HTG 1868



COOL GREY TEXTURE
HTG 1869



IVORY TEXTURE
HTI 1870



WHITE TEXTURE
HTW 1871



BROWN TEXTURE
HTC 1872

HYBRID GLOSSY



TRAFFIC BLUE GLOSSY
HGB 1800



KANGAROO BLUE GLOSSY
HGB 1801



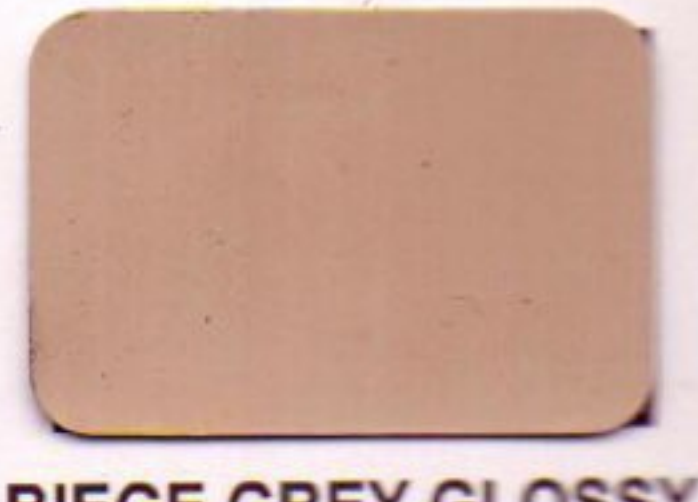
LILAC VIOLET GLOSSY
HGV 1802



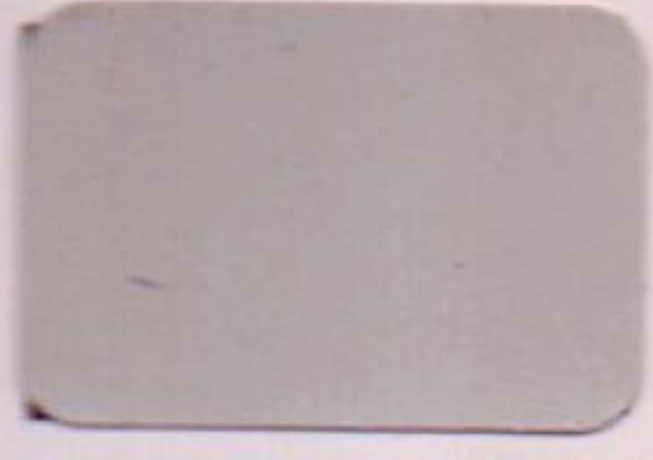
TRAFFIC VIOLET GLOSSY
HGV 1803



VIOLET GLOSSY
HGV 1804



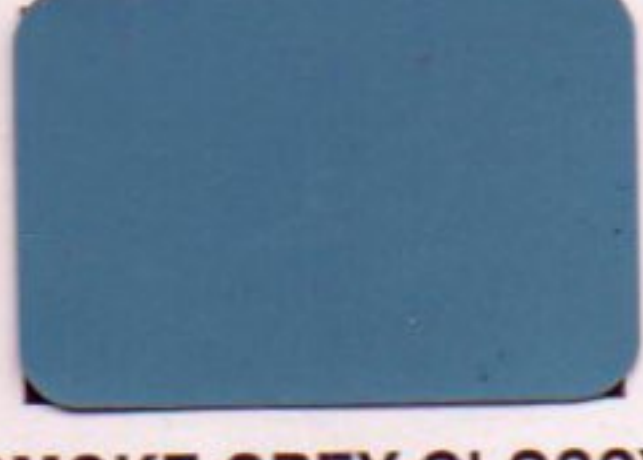
BIEGE GREY GLOSSY
HGG 1805



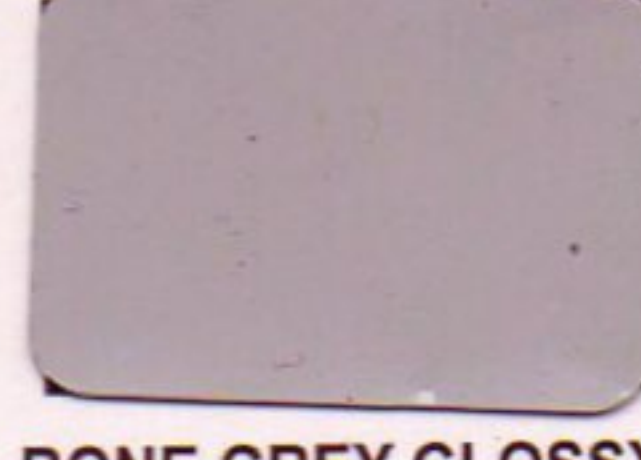
RAL 7035 GLOSSY
HGG 1806



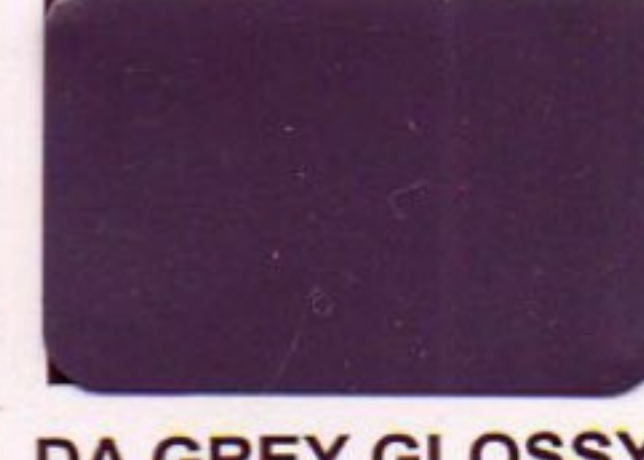
RAL 7032 GLOSSY
HGG 1807



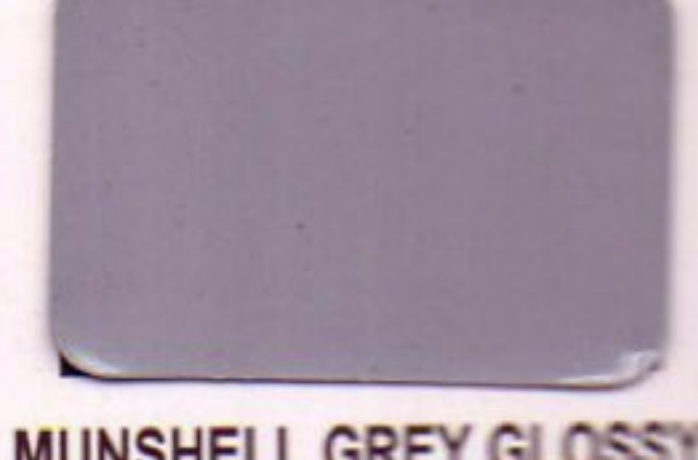
SMOKE GREY GLOSSY
HGG 1808



BONE GREY GLOSSY
HGG 1809



DA GREY GLOSSY
HGG 1810



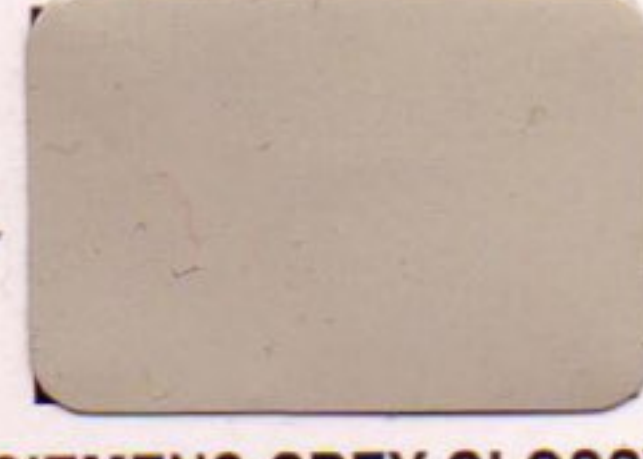
MUNSHELL GREY GLOSSY
HGG 1811



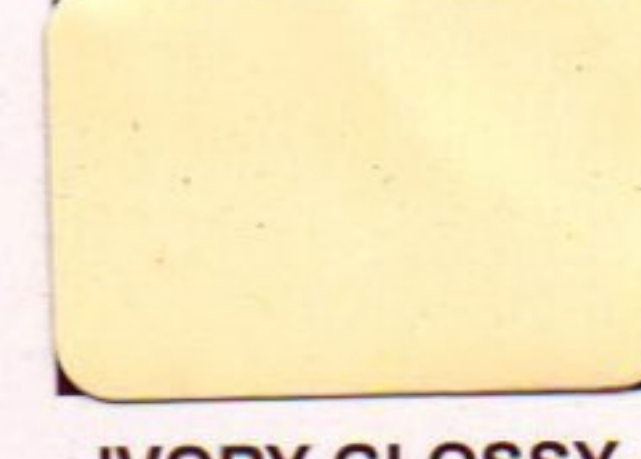
ASH GREY GLOSSY
HGG 1812



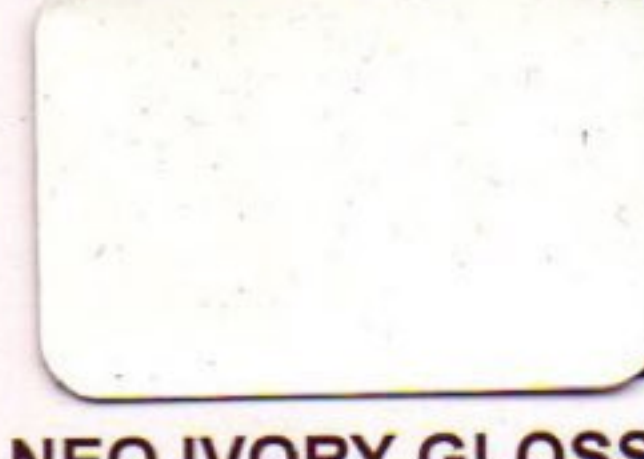
ANTHRACITE GREY GLOSSY
HGG 1813



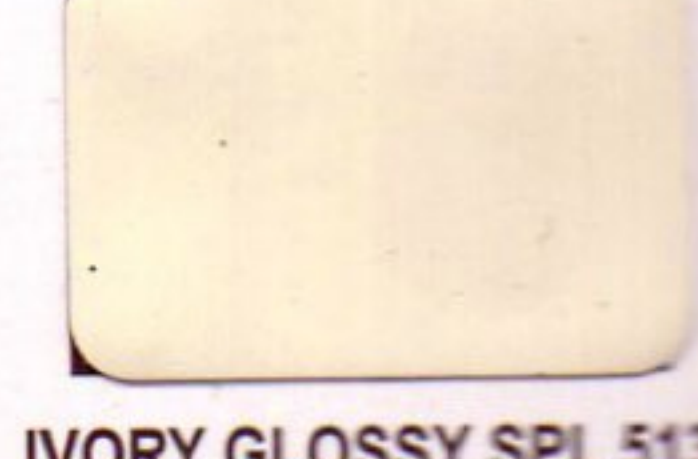
SIEMENS GREY GLOSSY
HGG 1814



IVORY GLOSSY
HGI 1815



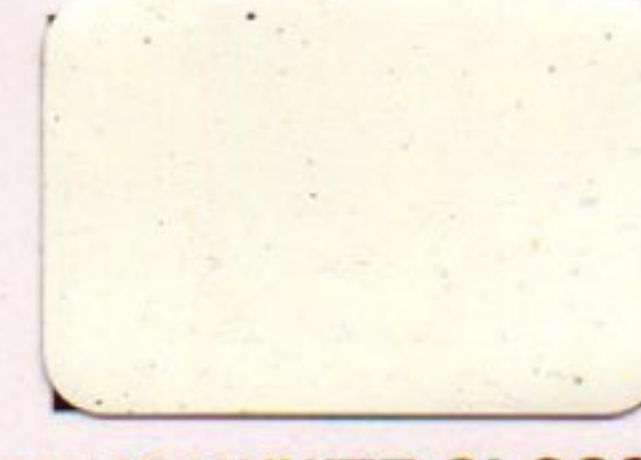
NEO IVORY GLOSSY
HGI 1816



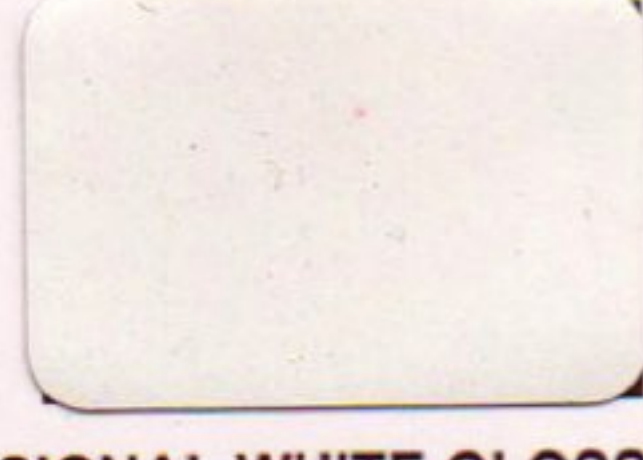
IVORY GLOSSY SPL 513
HGI 1817



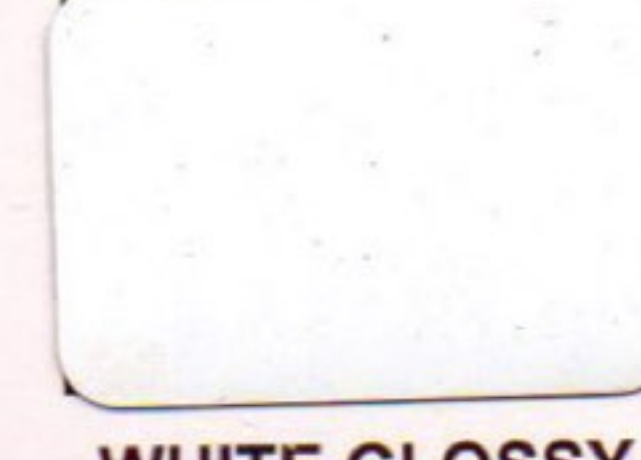
EBCO IVORY GLOSSY
HGI 1818



MILKY WHITE GLOSSY
HGW 1819



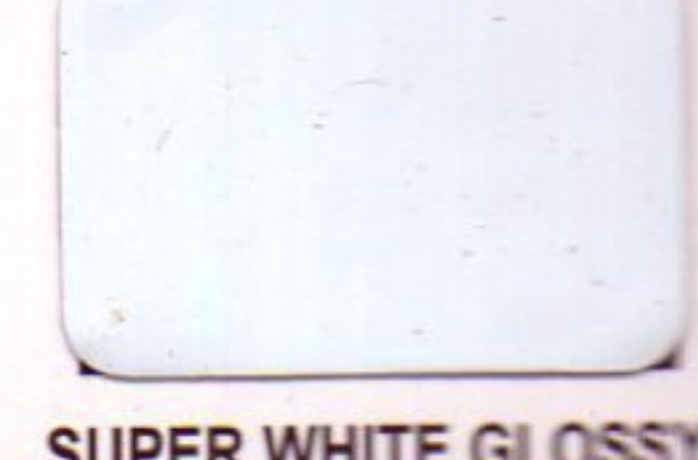
SIGNAL WHITE GLOSSY
HGW 1820



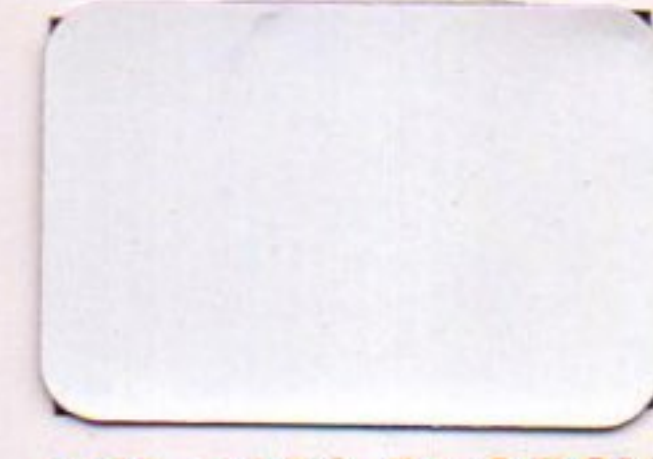
WHITE GLOSSY
HGW 1821



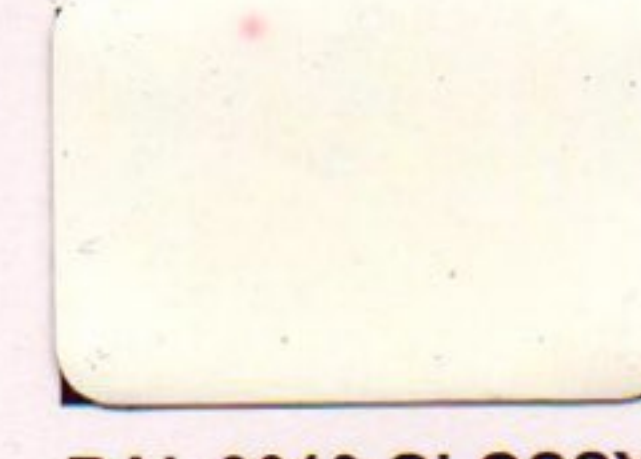
INTRON WHITE GLOSSY
HGW 1822



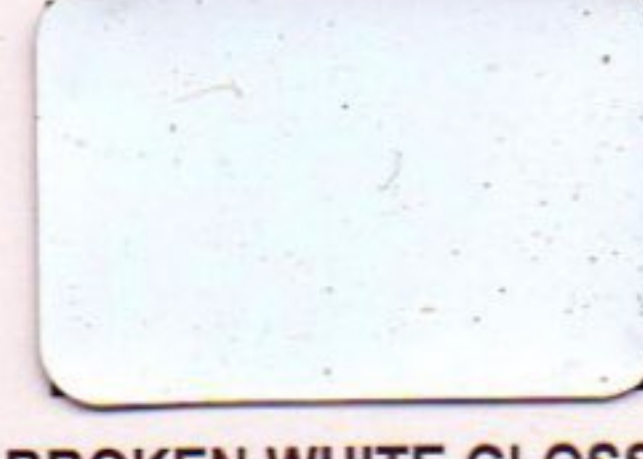
SUPER WHITE GLOSSY
HGW 1823



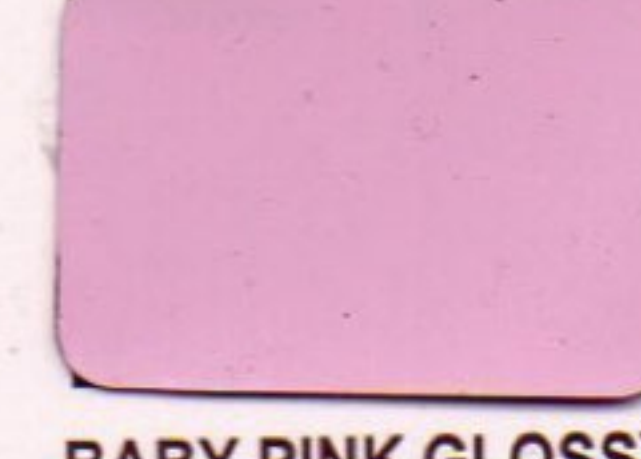
RAL 9003 GLOSSY
HGW 1824



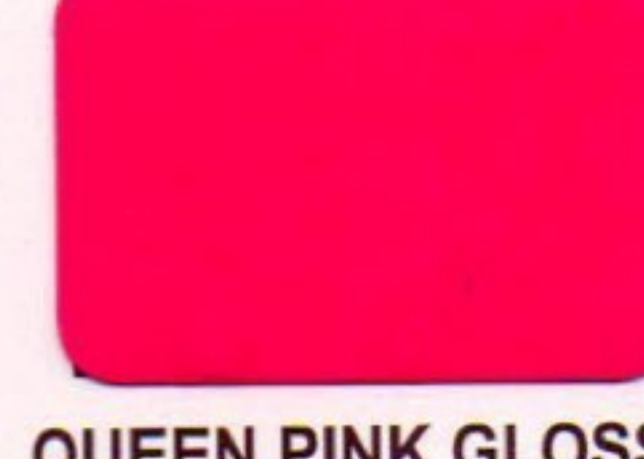
RAL 9010 GLOSSY
HGW 1825



BROKEN WHITE GLOSSY
HGW 1826



BABY PINK GLOSSY
HGO 1827



QUEEN PINK GLOSSY
HGO 1828

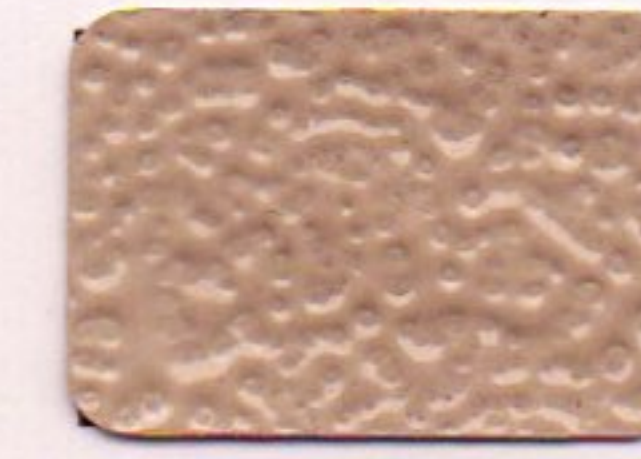


CANDY PINK GLOSSY
HGO 1829

STRUCTURE



RAL 7035 STRUCTURE
HSG 1830



RAL 7032 STRUCTURE
HSG 1831



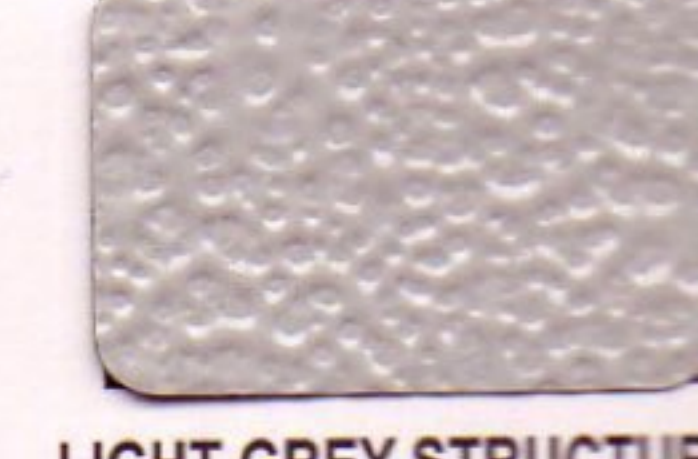
SIEMENS GREY STRUCTURE
HSG 1832



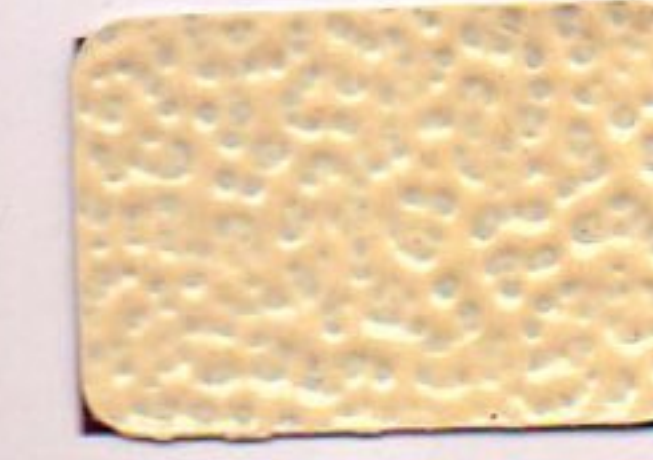
MUNSHELL GREY STRUCTURE
HSG 1833



DA GREY STRUCTURE
HSG 1834



LIGHT GREY STRUCTURE
HSG 1835



IVORY STRUCTURE
HIS 1836



LIGHT IVORY STRUCTURE
HIS 1836 A



INTRON WHITE STRUCTURE
HSW 1837



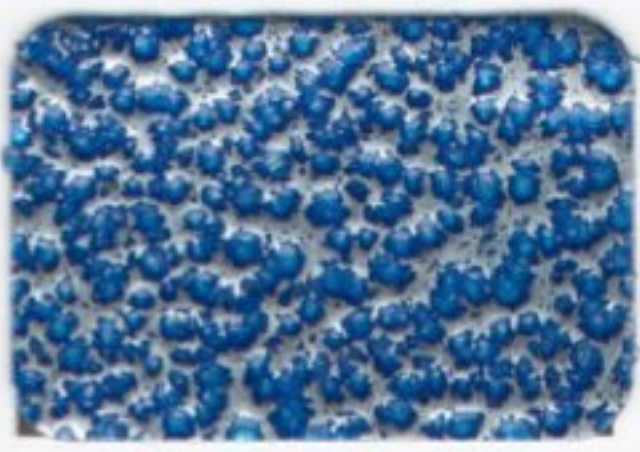
SM WHITE STRUCTURE
HSW 1838



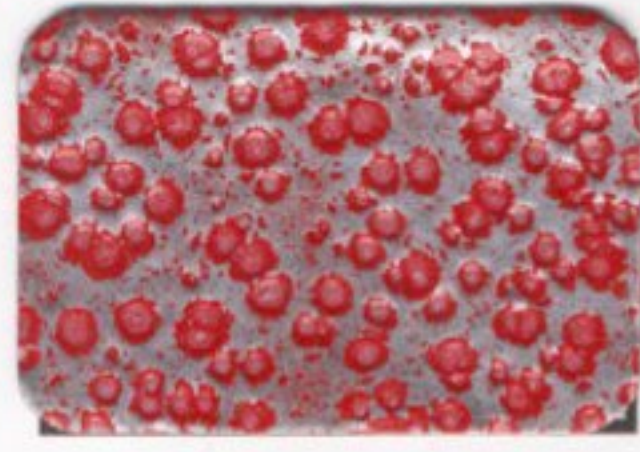
WHITE STRUCTURE
HSW 1839



BROKEN WHITE STRUCTURE
HSW 1840



ANTIQUÉ BLUE
AN 1873



ANTIQUÉ RED
AN 1874



ANTIQUÉ GREEN
AN 1875



ANTIQUÉ SILVER
AN 1876



ANTIQUÉ GOLD
AN 1877



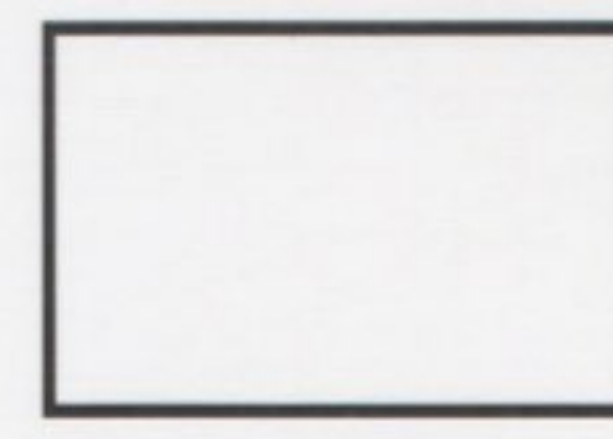
ANTIQUÉ COPPER
AN 1878



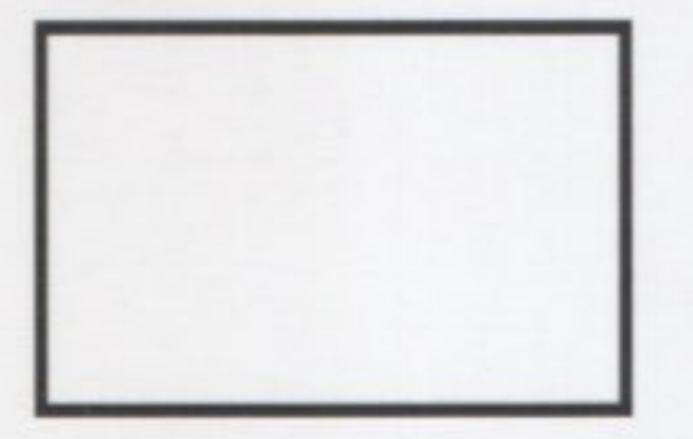
ANTIQUÉ WHITE
AN 1879



ANTIQUÉ GREY
AN 1880



ALLIGATOR BROWN
AN 1881



ALLIGATOR BEIGE
AN 1882



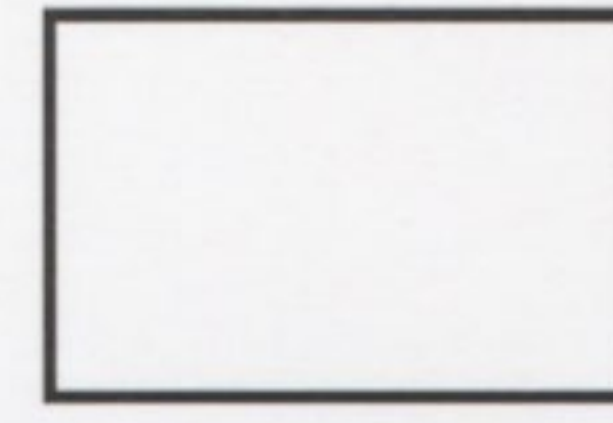
ALLIGATOR WHITE
AN 1883



ALLIGATOR MAROON
AN 1884



ALLIGATOR RED
AN 1885



ALLIGATOR BLACK
AN 1886



TPR GOLD
AN 1887



TPR BRASS
AN 1888



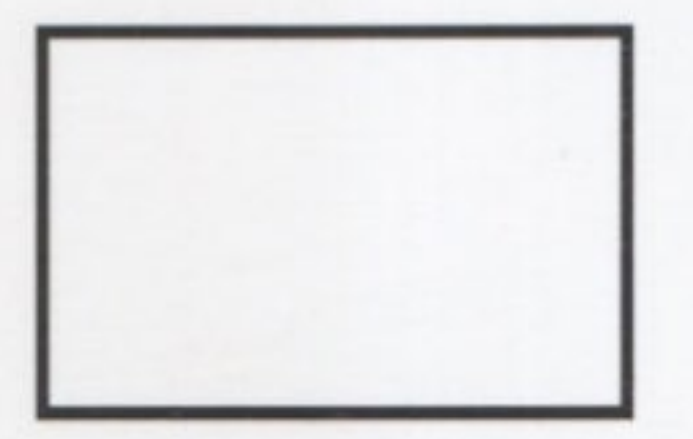
TPR BLUE
AN 1891



TPR ORANGE
AN 1892



TPR BLACK
AN 1893



TPR MATT GREY
AN 1894



TPR COPPER
AN 1889

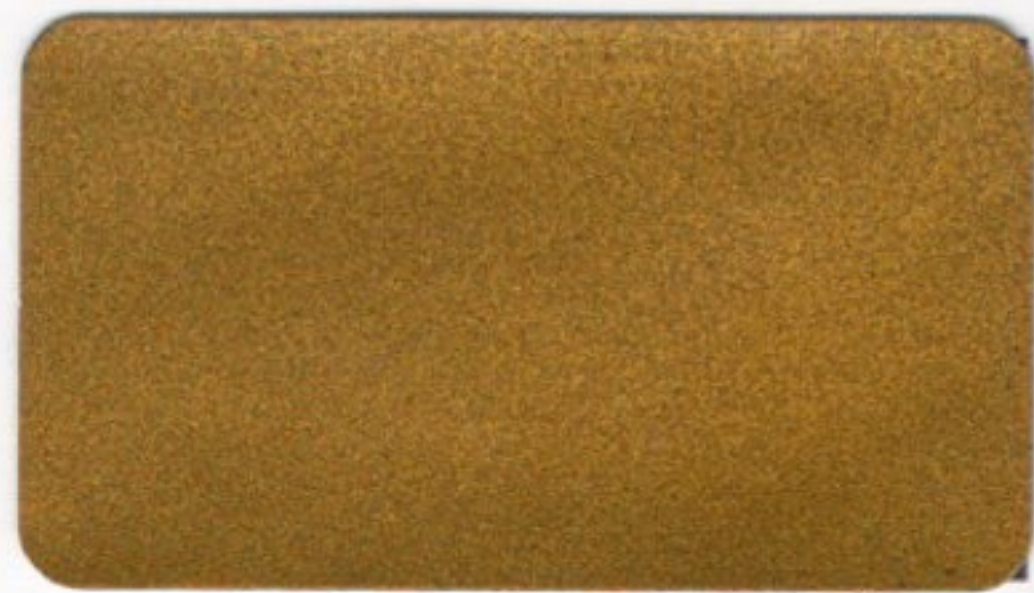


TPR RED
AN 1896

METALLIC SHADES



MET. BRIGHT GOLD
MT 1895



MET GOLD RAL 1036
MT 1896



MET SG GOLD
MT 1897



MET GOLD
MT 1898



TPR BRASS
MT 1899



MET CLIFF GOLD
MT 1900



MET DRY GOLD
MT 1901



MET SUPRIYA GOLD
MT 1902

Rishabh Coatings Pvt. Ltd. is a renowned name in quality Powder Coatings.

Manufacturing Powder with Brand name **KalpatruCoat™**

Is available in matt, satin, gloss, hi-gloss and various surface finishes like texture, structure, wrinkle, metallic, hammer tone, antique etc. based on RAL, Pantone, IS BIS etc. along with customize shades in following chemistries.

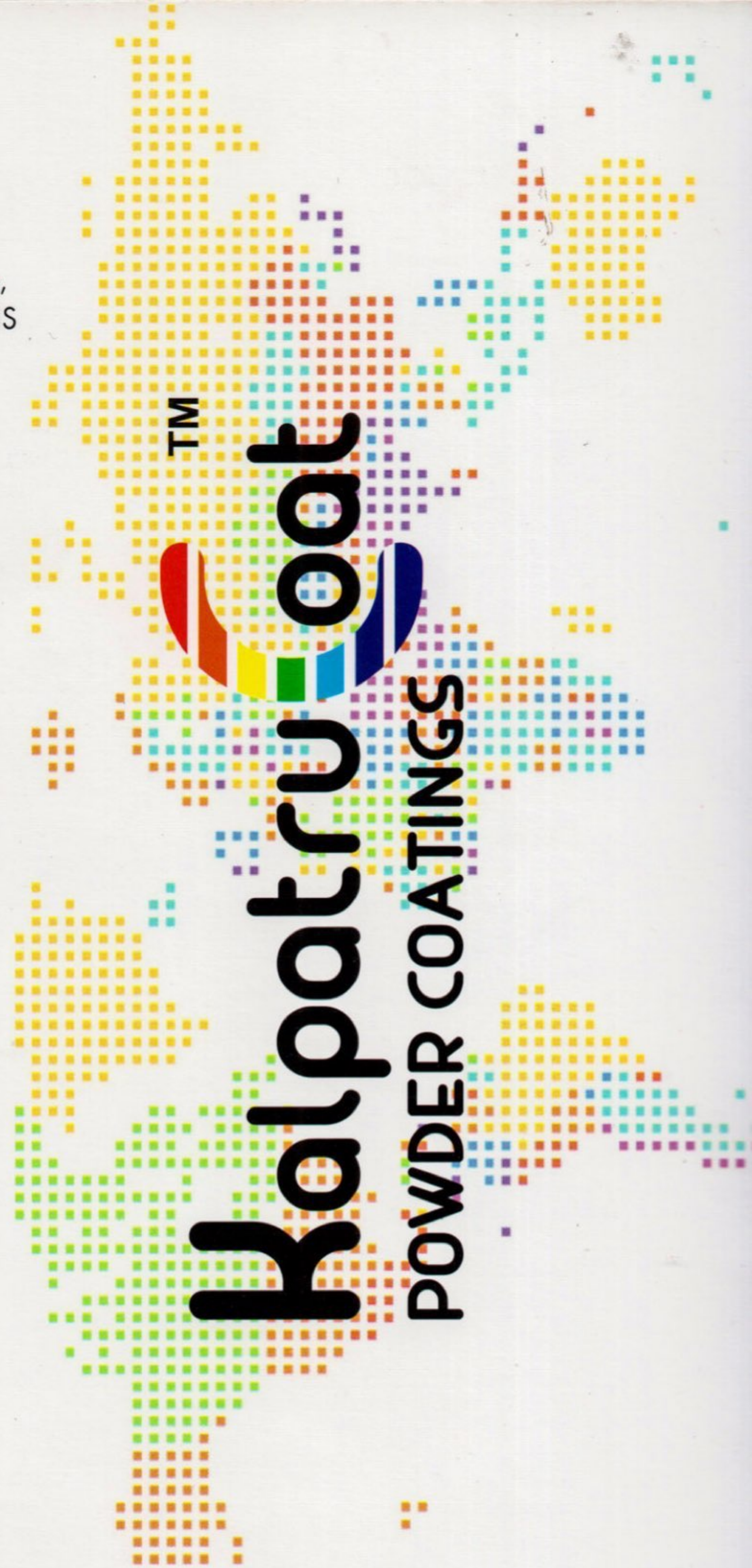
- ❖ Epoxy Powder Coatings.
- ❖ Epoxy Polyester Powder Coatings.
- ❖ Polyester Powder Coatings
- ❖ TGIC Free Polyester Coatings
- ❖ Polyurethane Powder Coatings
- ❖ Super Durable (Non-Metallic)
- ❖ Special Texture/Structure/Wrinkle Patterns
- ❖ High Impact (up to 300kgs-cm)
- ❖ Excellent Nail Resistant Metallic.

Dry Storage Conditions

Store Material under normal warehouse condition (35 deg C, RH = 60% appr.). Shelf life of material in closed boxes will be 6 to 12 months. Keep powder boxes away from oven and high temperature

Applications

By Electrostatic Spray gun (60-96 kv Gun Voltage)
Use low Voltage (20-40 kv) For Metallic Shades.



:: PLANT & CORPORATE OFFICE ::

Rishabh Coatings Pvt. Ltd.

G-885, PHASE IV, RIICO BORANADA
JODHPUR (RAJ.)

TEL. : +91 291 2972246 MOB. : +98290-33360

E-mail : info@kalptrucoat.com | Website : www.kalptrucoat.com

:: BRANCH OFFICE ::

MUMBAI OFFICE :

A123, SUSSEX INDUSTRIAL ESTATE
DADDOJI KONDDO CROSS LN
BYCULLA EAST, MUMBAI
MAHARASHTRA 400027

AHMEDABAD OFFICE :

20, SHRI MAHAVIR CLOTH MARKET
B/H. NEW CLOTH MARKET
AHMEDABAD - 380 022